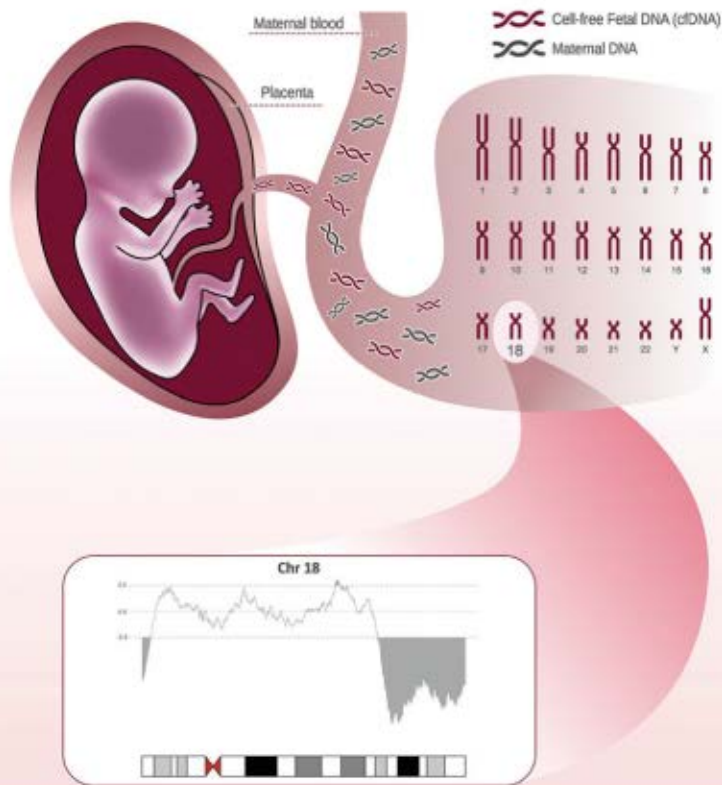


PRENATAL DIAGNOSIS



Clinical utility of genome-wide noninvasive prenatal screening
 Outcome of enlarged cisterna magna
 Perinatal post-mortem magnetic resonance imaging
 Systematic review of discordant noninvasive prenatal screening results

Official Journal of


ispd International Society
 for Prenatal Diagnosis
 Building Global Partnerships in Genetics and Fetal Care

www.prenataldiagnosisjournal.org

WILEY

ORIGINAL ARTICLE

The clinical utility of genome-wide non invasive prenatal screening

Francesco Fiorentino* , Sara Bono, Francesca Pizzuti, Sara Duca, Arianna Polverari, Monica Faieta, Marina Baldi, Laura Diano and Francesca Spinella

GENOMA—Molecular Genetics Laboratories, Rome, Italy

*Correspondence to: Francesco Fiorentino. E-mail: fiorentino@laboratoriogenoma.it

ABSTRACT

Objective In this study, we expanded conventional cell-free fetal DNA (cfDNA)-based non-invasive prenatal testing (NIPT) to cover the entire genome. We aimed to compare the performance of the two tests in a large general population of pregnant women, in order to assess the clinical utility of the genome-wide screening.

Method Genome-wide cfDNA analysis was offered to 12 114 pregnant women undergoing NIPT for common fetal aneuploidy. Sequencing data were analyzed using an algorithm optimized to identify aneuploidies and subchromosomal aberrations.

Results Genome-wide screening allowed detection of 12 (7.4%) potentially viable clinically relevant chromosomal abnormalities, which would have remained overlooked if only conventional NIPT had been performed. This resulted in a statistically significant higher sensitivity (100% vs 92.64%, $p < 0.001$) than did standard screening. This was achieved without sacrificing the specificity of the test, which resulted similar to that obtained with standard cfDNA testing (99.87% vs 99.77%, $p = 0.064$).

Conclusion Genome-wide cfDNA analysis represents an enhanced screening tool for prenatal detection of chromosomal abnormalities, allowing identification of clinically relevant imbalances that are not detectable by conventional cfDNA testing. The results of this study demonstrate the clinical utility of genome-wide cfDNA analysis. This level of screening provides a significant higher sensitivity compared to standard screening while maintaining a high specificity, with the potential to improve overall pregnancy management. © 2017 John Wiley & Sons, Ltd.

Funding sources: None

Conflicts of interest: None declared

INTRODUCTION

Since its introduction, noninvasive prenatal testing (NIPT) based on the analysis of circulating cell-free fetal DNA (cfDNA) in maternal plasma has had a significant impact on prenatal care. In only 4 years, NIPT has become integrated into clinical practice for detection of common fetal chromosomal aneuploidies.¹

The high sensitivity and specificity resulting from multiple large-scale clinical trials^{2–4} and updated meta-analyses,^{5–7} and the endorsement of professional medical organizations,^{8–12} have resulted in many institutions adopting NIPT for aneuploidy screening as standard option for high risk pregnancies.

Current cfDNA-based NIPT approaches focus on detection of a limited set of conditions, which typically include trisomy 21 (T21), trisomy 18 (T18), trisomy 13 (T13), sex chromosome aneuploidies (SCAs) and selected microdeletions. Consequently, a large set (approximately 17%) of clinically relevant chromosomal abnormalities is currently not accessible to standard cfDNA testing and is neglected by such a restricted detection scheme.¹³

Genome-wide analysis of cfDNA would greatly expand the range of chromosomal rearrangements detectable by NIPT, because it extends screening to include also rare autosomal trisomies and structural chromosome anomalies throughout the fetal genome, specifically disease-causing copy-number variations (CNVs). Such level of testing has the potential to improve overall pregnancy management, providing a significant higher sensitivity compared to standard screening.

In principle, massively parallel sequencing (MPS) of cfDNA in maternal plasma for NIPT of common fetal aneuploidies can also be used for detecting other unbalanced chromosomal rearrangements prenatally. Previous proof-of-concept studies have shown the potential of extending conventional NIPT to detect fetal microdeletion syndromes from maternal plasma.^{14–17} As a consequence, several commercial providers have expanded their NIPT platform to include a panel of common and well-characterized microdeletion syndromes.

Several groups have also demonstrated the feasibility to detect all fetal chromosomal aneuploidies and segmental

imbalances by sequencing cfDNA from maternal plasma.^{18–25} Recently, other studies showed how genome-wide cfDNA testing can contribute in lowering the incidence of false positive results generated by maternal copy number variants.^{26,27}

Limited data are currently available on the clinical implementation of genome-wide cfDNA screening to detect rare autosomal trisomies or structural chromosome anomalies in the routine clinical setting. The lack of prospective clinical results in a large population of pregnant women makes it difficult to accurately determine the test performance parameters, which are crucial if this is to be implemented in clinical practice.

The clinical utility of expanding NIPT to include detection of these other rearrangements, particularly in low-risk pregnancies, is controversial because this could lead to a decrease of the specificity, potentially affecting to some degree one of the major perceived benefits of NIPT screening: the significantly reduced requirement for invasive testing. Therefore, any change to the standard cfDNA screening approaches that may increase the false-positive rate, leading to maternal anxiety, should be weighed against the possible benefits prior to routine implementation.

In this study, we expanded standard cfDNA testing to cover the entire genome. We aimed to compare the performance of the two test (standard vs genome-wide cfDNA screening) in a large general population of pregnant women in order to assess the clinical utility of the genome-wide screening.

METHODS

Study design

From December 2015 through May 2016, genome-wide cfDNA testing was offered to a consecutive nonselected series of pregnant women undergoing conventional cfDNA-based NIPT for common fetal aneuploidy. We aimed to compare the performance of the two tests in a general obstetrical population.

Patients underwent pre-test counseling, during which the issues that are encountered with both standard cfDNA screening and genome-wide cfDNA analysis were discussed. The patients who accepted evaluation by NIPT with both methodologies signed an informed consent form containing a summary of the testing process, potential benefits and limitations of testing, and possible testing outcomes, including the risk of obtaining results with unknown clinical significance. In addition, the possible risk of misdiagnosis was specified, and confirmatory prenatal diagnosis for any abnormal result was recommended. A post-test genetic counseling session was provided in all cases when a chromosomal abnormality was detected by any method. Routine prenatal care was provided to those with a negative NIPT result. Study inclusion required accessibility to pregnancy and delivery records, such as reports from laboratory screening, fetal ultrasonography, cytogenetic testing and newborn physical examinations.

The institutional review board at Genoma Laboratory approved the study.

Study population and sample collection

The indication for testing was one or more of the following: advanced maternal age (AMA—defined as maternal age 35 or greater at time of conception), previous positive prenatal screen (PPS), fetal ultrasound abnormality (FUA), prior pregnancy with fetal aneuploidy (PPFA) or parental anxiety (PA), that is patients younger than 35 years with no specific pregnancy risk. Women with a singleton pregnancy and a qualified blood sample were included in the study. All testing was performed on whole-blood samples (10 mL) received in cfDNA BCT™ tubes (Streck, Omaha, NE), collected from patients with a confirmed pregnancy greater than 10 weeks of gestation (mean 12.3 ± 2.1). Samples were received within five days of blood draw and accessioned with a complete test requisition form (TRF). Cell-free fetal DNA was extracted and processed at GENOMA Laboratory (Rome, Italy) for library preparation, sequencing and data analysis, following the protocol described in the next section.

Sample preparation

The blood samples were first centrifuged at 1600 g for 10 min at 4 °C to separate the plasma from peripheral blood cells. The plasma portion was then carefully transferred into a polypropylene tube and subjected to a second centrifugation at 16 000 g for 10 min at 4 °C, in order to remove residual cells. Cell-free DNA was extracted from 900 µL of maternal plasma using the QIAamp DNA Blood Mini Kit (Qiagen), following the manufacturer's protocol.

Sequencing and classification of the results

Sequencing libraries were prepared using TruSeq nano Kit (Illumina, San Diego, CA, USA) as reported elsewhere.²⁸ Samples were indexed during library preparation, and seven samples were pooled for multiplex sequencing on a NextSeq 550 (Illumina, San Diego, CA, USA), using the High Output v1.2 kit that generates 36 BP single-end reads.

To reduce noise and increase signal, sequencing depth was increased to target 30 million reads per sample, unambiguously mapping to a single genomic location.

A single sequencing run was performed for both conventional cfDNA screening and genome-wide analysis, followed by two different bioinformatic analyses, one limited to the common aneuploidies, the other involving testing for rare trisomies and segmental imbalances throughout the fetal genome.

The raw output from each run was analyzed as described elsewhere.²¹ Briefly, sequencing reads were aligned to the reference genome hg19 using the Burrows–Wheeler aligner.²⁹ The genome was then partitioned into 50-kb bins, and the total number of reads for each bin was determined. The 50-kb bin count was then corrected with LOESS regression according to the bin GC content. Normalized bins were finally aggregated per 5 Mb windows, consisting of 100 subsequent 50 kb bins, where the 5 Mb windows are sliding by 50 kb.

Apart from calculating a *Z* score per chromosome, *Z* scores were also calculated per 5 Mb bins.

Quality control criteria

Samples were not included in the analyses if they did not pass one or more of the following quality control parameters:

- (1) low fraction of fetal cfDNA (<2%);
- (2) assay failure: that is, library concentration < 10 nM; number of unique sequence sites (i.e. sequence tags identified with unique sites in the genome) < 25 000 000;

Fetal fraction measurement was performed as previously reported.²⁸ In samples from pregnancies carrying female fetuses, the FF was determined using the method described elsewhere,³⁰ with slight modifications consisting in the use of real time PCR technique.

Clinical outcomes

All patients were followed for pregnancy outcomes. Chromosomally abnormal results of cfDNA testing were confirmed performing a metaphase and/or array-CGH-based karyotyping after an invasive prenatal diagnostic procedure or from products of conception, in the case of a spontaneous miscarriage. Chromosomally normal results were confirmed by newborn physical examination and any genetic testing performed. In the absence of genetic testing, a newborn with a normal physical examination was considered to be euploid.

All pregnancy outcomes were recorded, including miscarriage, termination and delivery. Results of invasive prenatal diagnostic testing and testing of products of conception (i.e. miscarriages) were collected when available.

Follow-up information was obtained by telephone and recorded in an internal database. Telephone interviews were performed one month after the expected date of delivery to obtain information on neonatal outcome, newborn physical examination or any cytogenetic testing results. Karyotyping or clinical follow-up results were used as the gold standard to calculate sensitivity and specificity of NIPT in this population.

Statistical analysis

Statistical analyses were performed using Microsoft Excel® software statistical tools. We used the Clopper–Pearson method³¹ to calculate the performance characteristics of the test (sensitivity, specificity, and positive and negative predictive values) and exact 95% confidence intervals.

We used Pearson chi-square test to evaluate the statistical significance of the comparison of the performance of the cfDNA approaches. A *p*-value of less than 0.05 was considered to indicate statistical significance.

RESULTS

A total of 12 114/13 523 (89.6%) pregnant women agreed to undergo genome-wide cfDNA screening and were enrolled in the study. The patient demographic characteristics and indication for testing are summarized in Supplementary Table S1. The mean age of the pregnant women was 35.3 ± 4.1 years

(range, 20–58 years), and gestational age ranged from 10 weeks to 29 weeks (mean 12.3 weeks ± 2.1 days).

Of the 12 114 samples received, 36 (0.3%) were excluded from the analysis because an assay failure. The remaining 12 078 (99.7%) samples were with a call (Table 1).

Among the samples with a result, 145 (1.2%) were cancelled because fetal cfDNA resulted below the limit of detection value (FF < 2%).²⁸

A blood redraw was requested for samples with an assay failure and low FF. After reanalysis, all the above samples were classified as euploid, and the results were confirmed by newborn physical examination.

Clinically relevant chromosomal abnormalities were detected in 196 (1.6%) pregnancies and confirmed by metaphase karyotyping or array-CGH following invasive prenatal diagnosis in 169 (1.4%) cases, 151 of which involved common aneuploidies, 10 were rare autosomal trisomies and 8 were segmental imbalances (Supplementary Figure 7).

Trisomy 21, trisomy 18, trisomy 13 and sex chromosome aneuploidy detection

Among the 12 114 reportable samples following standard cfDNA screening, 89 were classified with T21, 16 with T18, 13 with T13, 48 with SCA and 11 766 as euploid. Out of 166 pregnancies, classified as chromosomally abnormal, 151 were confirmed by invasive prenatal diagnosis as true positives. Fifteen pregnancies, reported as T21 (1 patient), T18 (1 patient), T13, (1 patient), Monosomy X (10 patients), XXX (1 patient) and XXY (1 patient), respectively, resulted with a normal karyotype after amniocentesis (Table 2) and were then classified as false positives. No false negative cases have been reported.

Table 3 summarizes the performance of the cfDNA testing for common aneuploidies. For T21, the sensitivity was 100% (95% confidence interval [CI], 95.89%–100%), and the specificity was 99.99% (95% CI, 99.95%–100%). For T18, the

Table 1 Results of samples tested

	Total
No. of patients analyzed	12 114
Samples with a call—no. (%)	12 078 (99.7)
Total cancellations—no. (%)	182 (1.5)
Samples with low FF—no. (%)	145 (1.2)
Samples with assay failure—no. (%)	36 (0.3)
Samples with a conclusive result—no. (%)	11 932 (98.5)
Samples with a conclusive result after reanalysis of samples with a cancellation—no. (%)	12 114 (100)
Chromosomally abnormal results	
Genome-wide cfDNA screening—no. (%)	196 (1.6)
Conventional cfDNA screening—no. (%)	166 (1.4)
Pregnancies confirmed as chromosomally abnormal—no. (%)	
Genome-wide cfDNA screening—no. (%)	169 (1.4)
Conventional cfDNA screening—no. (%)	151 (1.2)

FF, fetal fraction.

Table 2 Clinically relevant chromosomal abnormalities detected by genome-wide cfDNA analysis and clinical outcome

Chromosomal abnormality	Total number detected	Follow-up invasive testing		Follow-up miscarriages ^a	
		Confirmed	Not confirmed	Confirmed	Not confirmed
Common aneuploidies	166	151	15	—	—
Trisomy 21	89	88	1	—	—
Trisomy 18	16	15	1	—	—
Trisomy 13	13	12	1	—	—
Monosomy X	24	14	10	—	—
Triple X Syndrome (XXX)	7	6	1	—	—
Klinefelter Syndrome (XXY)	15	14	1	—	—
Jacobs Syndrome (XYY)	2	2	0	—	—
Rare autosomal trisomies	17	3	7	7	0
Trisomy 7	4	1 ^b	3	—	—
Trisomy 9	1	1 ^b	0	—	—
Trisomy 12	1	0	1	—	—
Trisomy 14	1	0	1	—	—
Trisomy 15	4	0	1 ^c	3	0
Trisomy 16	1	0	1	—	—
Trisomy 22	5	1 ^b	0	4	0
Structural abnormalities—CNV	13	8	5	—	—
del5p15.32p13.2	1	1	0	—	—
del5q14.3q32	1	0	1	—	—
del7q21.11q31.1	1	0	1	—	—
dup7p22.3p21.1/dup9p24.1q31.3	1	1	0	—	—
dup8p23.3q13.3	1	0	1	—	—
dup9p24.3p13.1	1	0	1	—	—
dup11p15.1p15.4	1	1	0	—	—
del13q33.1q34/dup20q13.33	1	1	0	—	—
del18p11.32p11.31 – del18q21.32q23	1	1	0	—	—
dup18p11.32p11.21	1	1	0	—	—
del20q11.21q13.32	1	0	1	—	—
del22q11.21	1	1	0	—	—
del Xp22.33p11.1	1	1	0	—	—

^aKaryotype from product of conception samples.

^bFetal mosaicism.

^cFollow-up invasive testing resulted in a diploid fetus with UPD of chromosome 15.

sensitivity was 100% (95% CI, 78.20%–100%), and the specificity was 99.99% (95% CI, 99.95%–100%). For T13, the sensitivity was 100% (95% CI, 73.54%–100%), and the specificity was 99.99% (95% CI, 99.95%–100%). The sensitivity for SCA was 100% (95% CI, 90.26%–100%) with a specificity of 99.9% (95% CI, 99.82%–99.95%).

Overall, common aneuploidies were detected with a combined clinical sensitivity and specificity of 100% (95% CI, 97.59%–100%) and 99.87% (95% CI, 99.79%–99.93%), respectively.

Genome-wide detection of copy number variants

Among the 12 114 samples reportable following genome-wide cfDNA analysis, there were 30 pregnancies that had positive

results for a variety of CNV aberrations other than common aneuploidies, including both segmental chromosomal imbalances and rare autosomal trisomies (Table 2). The details of the CNVs detected are shown in Supplementary Table S2. Several examples of NIPT-detected CNVs, confirmed by invasive prenatal diagnosis, are shown in Figures 1 and 2.

Rare autosomal trisomies were identified in 17 samples and confirmed in 10 pregnancies, three of which consisted in a low-grade fetal mosaicism and seven resulted in a spontaneous miscarriage (Supplementary Figures 5 and 6). In a pregnancy with a trisomy 15 detected, follow-up invasive testing resulted in a diploid fetus with uniparental disomy of chromosome 15, because of a trisomy rescue event.

Table 3 Performance of the genome-wide cfDNA screening approach

	Trisomy 21 (n = 12 114)	Trisomy 18 (n = 12 114)	Trisomy 13 (n = 12 114)	Sex chromosome aneuploidies (n = 12 114)	Rare aneuploidies (n = 12 114)	Segmental imbalances (n = 12 114)
False positive—no.	1	1	1	12	7	5
False negative—no.	0	0	0	0	0	0
True positive—no.	88	15	12	36	10	8
True negative—no.	12.025	12.098	12.101	12.066	12.097	12.101
Sensitivity (95% CI)—%	100.00% (95.89%–100.00%)	100.00% (78.20%–100.00%)	100.00% (73.54%–100.00%)	100.00% (90.26%–100.00%)	100.00% (69.15%–100.00%)	100.00% (63.06%–100.00%)
Specificity (95% CI)—%	99.99% (99.95%–100.00%)	99.99% (99.95%–100.00%)	99.99% (99.95%–100.00%)	99.90% (99.83%–99.95%)	99.94% (99.88%–99.98%)	99.96% (99.90%–99.99%)
Positive predictive value (95% CI)—%	98.88% (92.54% to 99.84%)	93.75% (67.88%–99.07%)	92.31% (62.83%–98.84%)	75.00% (63.02%–84.08%)	58.82% (40.52%–74.97%)	61.54% (39.98%–79.35%)
Negative predictive value (95% CI)—%	100.00% (99.95%–100.00%)	100.00% (99.95%–100.00%)	100.00% (99.95%–100.00%)	100.00% (99.95%–100.00%)	100.00% (99.95%–100.00%)	100.00% (99.95%–100.00%)

Clinically relevant segmental chromosomal imbalances were detected in 13 pregnancies and confirmed by invasive prenatal diagnosis in eight cases (Figures 1 and 2; Supplementary Figures 1–4). It is worth noting that three out of eight structural chromosomal abnormalities occurred in low risk pregnancies. In addition, in two of these, a fetus with unbalanced translocations was identified, which was subsequently found to be inherited from the mother, who was unaware to be a balanced translocation carrier (Figure 2; Supplementary Figure 2).

Table 3 summarizes the performance of the cfDNA testing for chromosomal abnormalities other than common aneuploidies. For rare autosomal trisomies, the sensitivity was 100% (95% CI, 69.15%–100%), and the specificity was 99.94% (95% CI, 99.88%–99.98%). The sensitivity for segmental imbalances was 100% (95% CI, 63.06%–100%) with a specificity of 99.96% (95% CI, 99.90%–99.99%).

For the calculation of sensitivity of segmental imbalances, we assumed that all imbalances have been identified, although we cannot rule out that very small rearrangements may have remained unnoticed in the newborns.

Overall, genome-wide cfDNA screening provided a combined clinical sensitivity and specificity of 100% (95% CI, 97.84%–100%) and 99.77% (95% CI, 99.67%–99.85%), respectively.

Conventional versus genome-wide conventional cell-free fetal DNA screening

Genome-wide cfDNA screening allowed identification of 18/169 (10.7%) clinically relevant chromosomal abnormalities, not detected by conventional cfDNA screening (Supplementary Figures 8). Twelve (7.4%) of these (including also the UPD 15 occurrence), potentially resulting in the birth of babies with chromosomal anomalies, would have remained overlooked if only conventional NIPT had been performed. This resulted in a statistically significant higher sensitivity (100% vs 92.64%, $p < 0.001$) than did standard screening for the detection of common aneuploidies (Table 4). This was achieved without sacrificing the specificity of the test, that resulted very similar to that obtained with standard screening (99.87% vs 99.77%, $p = 0.064$).

DISCUSSION

In this study, we investigated the clinical performance of genome-wide cfDNA screening in a large general population of pregnant women and compared it with standard cfDNA screening. We aimed to assess the usefulness of offering genome-wide cfDNA analysis in NIPT on a routine basis, trying to address the following issues: (1) if genome-wide cfDNA testing is accurate in the detection of common and rare aneuploidies, as well as segmental chromosome abnormalities throughout the fetal genome; (2) if the approach improves the detection rate of genetic aberrations as compared with conventional cfDNA screening; and (3) if there is a statistically significant increase in false positive results that may substantially affect the specificity of genome-wide cfDNA analysis and cause difficulties in case management and parental anxiety.

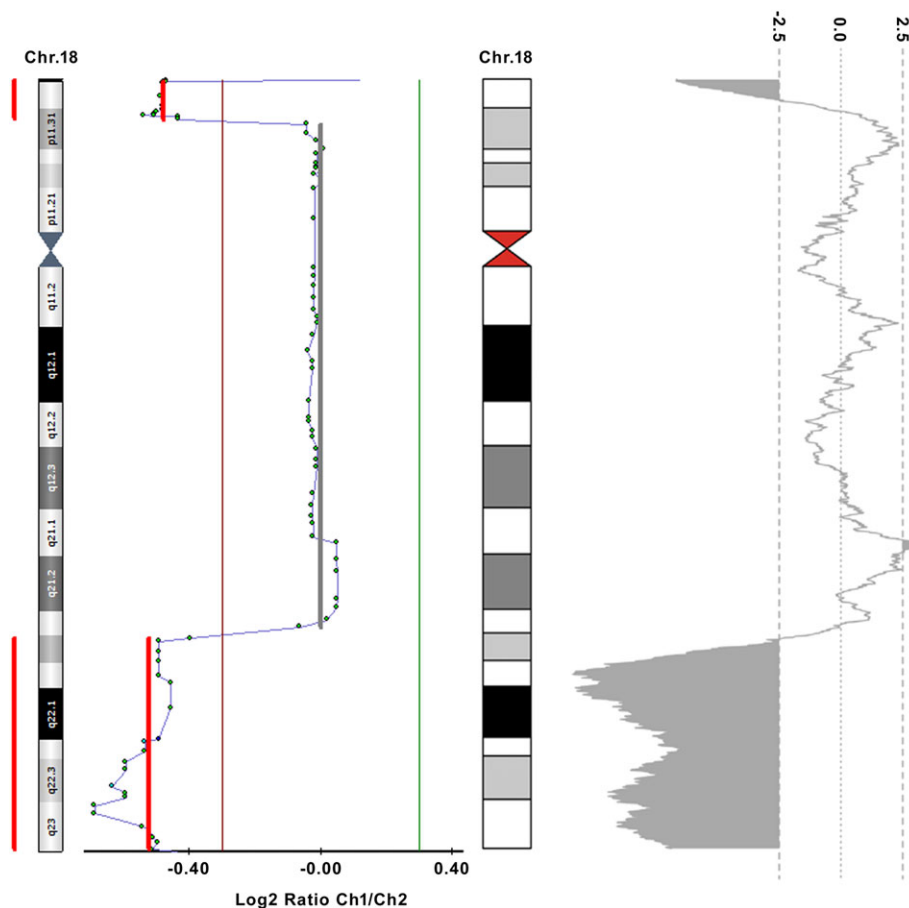


Figure 1 Clinically relevant fetal copy number variants (CNVs) detected in maternal plasma by genome-wide cfDNA screening, with results confirmed by invasive testing. Detection of a 3.9 Mb deletion at 18p11.32p11.31 and a 21.3 Mb deletion at 18q21.32q23 (Case 2). The right panel shows cfDNA sequencing results; Z-scores of 5 Mb sliding windows are plotted across the chromosome, dotted lines represent ± 2.5 z-scores and the areas above or below these cutoff values, colored in gray, highlight the aberrations. The left panel shows invasive testing results by microarray analysis

The results achieved from this prospective study demonstrated the effectiveness and benefits of NIPT performed by genome-wide cfDNA analysis compared to conventional cfDNA testing.

As expected, the use of genome-wide cfDNA screening resulted in a statistically significant higher sensitivity (100% vs 92.64%, $p < 0.001$), with the detection of 12 (7.4%) clinically relevant fetal chromosome anomalies, potentially resulting in the birth of chromosomally abnormal babies, that would have been missed if only conventional NIPT had been performed. This increased detection rate was achieved without sacrificing the specificity of the test, which resulted very similar to that obtained with standard screening (99.87% vs 99.77%, $p = 0.064$).

A limitation of this study is related with the estimation of sensitivity of segmental imbalances. No live-born child resulted to have chromosomal abnormalities; consequentially, we reported 100% sensitivity for genome-wide screening assuming that all imbalances have been identified. However, we cannot rule out that very small rearrangements may have remained unnoticed in the newborns. At present, confidently excluding the presence of a pathogenic CNV requires chromosome microarray analysis (CMA) of genetic material

obtained from the newborns. The current clinical study design did not include infant follow-up by CMA, so we were unable to determine whether negative genome-wide screening results were actual true negative, although the possibility of genome-wide analysis false results going undetected remained low.

Evidence regarding the increased detection yield of the genome-wide cfDNA testing approach with respect to conventional cfDNA screening makes its use attractive in a routine NIPT practice. However, the clinical utility of expanding NIPT to cover the entire genome is controversial, especially in low-risk pregnancies. In fact, it pertains a risk of overdiagnosis with a higher number of false positives because of chromosomal rearrangements which are confined to the placenta. It may lead to maternal anxiety and may potentially determine an increase in unnecessary invasive testing, in women for whom this would not normally be considered. The results of this study demonstrate that a high specificity may be maintained while extending the screen to all chromosomal abnormalities.

Genome-wide cfDNA screening allowed not only the detection of common chromosomal aneuploidies but also enabled the identification of rare autosomal trisomies. Extending the screen to all chromosomal aneuploidies may

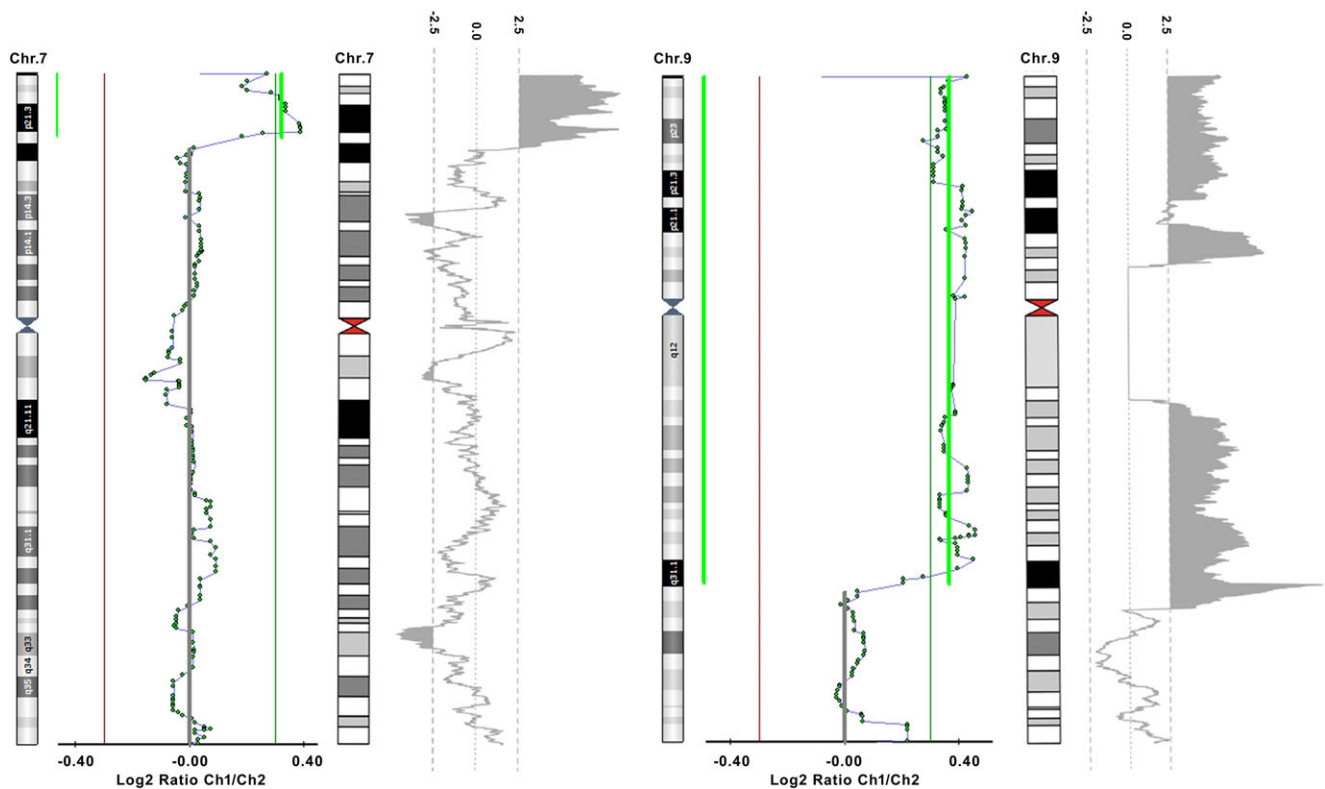


Figure 2 Fetal unbalanced translocations detected in maternal plasma by genome-wide cfDNA screening, with results confirmed by invasive testing. Detection unbalanced translocation derivatives consisting of a 15.0 Mb duplication at 7p22.3p21.1 and a 107.5 Mb duplication at 9p24.1q31.3 (Case 4). The right panel shows cfDNA sequencing results; the left panel shows invasive testing results by microarray analysis

Table 4 Performance of conventional cfDNA screening versus genome-wide analysis

	Conventional cfDNA screening	Genome-wide cfDNA screening	<i>p</i> -Value ^a
No. of pregnancies assessed	12 114	12 114	
Clinical relevant chromosomal abnormalities detected—no.	166	196	
Pregnancies confirmed as chromosomally abnormal—no.	151	169	
False positive	15	27	
False negative	12 ^b	0	
True positive	151	169	
True negative	11 936	11 918	
Sensitivity	92.64%	100.00%	<0.001
Specificity	99.87%	99.77%	0.064
Positive predictive value (PPV)	90.96%	86.22%	0.161
Negative predictive value (NPV)	99.90%	100.00%	<0.001

^aA *p* value of less than 0.05 was considered to indicate statistical significance.

^bClinically relevant chromosomal abnormalities, not detected by conventional cfDNA screening, potentially resulting in the birth of babies with chromosomal anomalies, have been considered as false negative.

be of questionable clinical utility, because it could determine a useless increase in invasive testing. However, most of the rare trisomies identified in this study are not viable and, therefore, may not require an invasive testing follow-up, thus limiting the risk of overdiagnosis. On the other hand, such additional data have important clinical implications and may be helpful in improving pregnancy management. In fact, it is known that placental mosaicism carries a small but significant risk for intrauterine growth restriction (IUGR), small-for-gestational-age infants and unfavorable pregnancy outcome (e.g. T16),^{32–35} as well as a risk of mosaic fetal aneuploidy and/or fetal uniparental disomy (UPD), resulting from the loss of one chromosome following a trisomic conception because of a trisomy rescue event.³⁶ In our study, three pregnancies resulted with a fetal mosaicism of a rare trisomy. In addition, in a pregnancy with a trisomy 15 detected, follow-up invasive testing resulted in a diploid fetus with UPD of chromosome 15.

Hence, when rare autosomal aneuploidies are observed by genome-wide analysis, amniocentesis is indicated in some cases to confirm confined placental mosaicism (CPM) and to rule out fetal mosaicism. It is also advisable to undertake UPD testing, in particular where chromosomes 6, 7, 11, 14, 15 or 20 are involved because of the presence of known imprinting disorders. Serial ultrasound examinations to monitor fetal growth for IUGR are also warranted in such cases.

We believe that a genome-wide analysis can lead to an improved clinical management. However, at this initial stage,

the additional information on rare trisomies must be interpreted with caution in order to minimize increases in invasive tests because of aneuploidies which are probably confined to the placenta. The need to perform invasive testing in cases with rare trisomies should be discussed between laboratory specialists, medical geneticists and obstetricians, on a case-to-case base. The advice to the parents will depend on gestational age, type of chromosome abnormality, presence or absence of ultrasound findings and parental preferences. Further studies are warranted to evaluate the outcomes of such pregnancies which will eventually allow the development of rules for the best clinical follow-up actions to be taken.

Genome-wide cfDNA analysis also enabled the detection of structural chromosomal abnormalities. Among the eight pregnancies with fetal segmental chromosomal imbalances identified, confirmed by invasive prenatal diagnosis, the smaller chromosome segment detected was 1.9 Mb in size (Supplementary Figure 2), demonstrating the power of this approach.

Genome-wide cfDNA screening has also aided in detection of a previously unknown familial translocation. In fact, two out of eight structural chromosomal abnormalities identified involved a fetus with unbalanced translocations, which was subsequently found to be inherited from the mother, who was unaware to be a balanced translocation carrier. Therefore, genome-wide cfDNA analysis may also represent a valuable option for families with a known translocation.

CONCLUSION

In conclusion, this study demonstrated that MPS-based NIPT protocols for common aneuploidies can also be used to detect

all fetal chromosomal aneuploidies, segmental imbalances and even submicroscopic CNVs, by sequencing cfDNA from maternal plasma. Genome-wide cfDNA analysis represents an improved screening tool for prenatal detection of chromosomal abnormalities, allowing identification of clinically relevant imbalances that are not detectable by conventional cfDNA screening. Although genome-wide cfDNA analysis has shown the potential to improve overall pregnancy management, additional clinical data must be obtained before this approach can be evaluated for routine integration into NIPT programs. Further prospective studies in this area, with a large cohort of patients analyzed, will further enhance understanding of clinical effectiveness of genome-wide screening, elucidating the role that this technique will come to play in NIPT, including whether it may replace the use of standard cfDNA screening.

WHAT'S ALREADY KNOWN ABOUT THIS TOPIC?

- Conventional cfDNA-based NIPT focuses on detection of common aneuploidies, leaving a gap of ~17% of clinically relevant chromosomal abnormalities that would go undetected. Genome-wide NIPT would greatly expand the range of chromosomal rearrangements detectable, but it could lead to a decrease of the specificity and, consequentially, to an increase in unnecessary invasive testing.

WHAT DOES THIS STUDY ADD?

- This study demonstrates the clinical utility of expanding NIPT to cover the entire genome. Genome-wide cfDNA analysis provides a significant higher sensitivity compared to standard screening while maintaining a high specificity.

REFERENCES

1. Chitty LS, Bianchi DW. Noninvasive prenatal testing: the paradigm is shifting rapidly. *Prenat Diagn* 2013;33:511–13.
2. Zhang H, Gao Y, Jiang F, *et al.* Non-invasive prenatal testing for trisomies 21, 18 and 13: clinical experience from 146,958 pregnancies. *Ultrasound Obstet Gynecol* 2015;45:530–8.
3. McCullough RM, Almasri EA, Guan X, *et al.* Non-invasive prenatal chromosomal aneuploidy testing—clinical experience: 100,000 clinical samples. *PLoS One* 2014;9:e109173.
4. Taneja PA, Snyder HL, de Feo E, *et al.* Noninvasive prenatal testing in the general obstetric population: clinical performance and counseling considerations in over 85 000 cases. *Prenat Diagn* 2016;36:237–43.
5. Gil MM, Quezada MS, Revello R, *et al.* Analysis of cell-free DNA in maternal blood in screening for fetal aneuploidies: updated meta-analysis. *Ultrasound Obstet Gynecol* 2015;45:249–66.
6. Mackie FL, Hemming K, Allen S, *et al.* The accuracy of cell-free fetal DNA-based non-invasive prenatal testing in singleton pregnancies: a systematic review and bivariate meta-analysis. *BJOG* 2017;124:32–46.
7. Taylor-Phillips S, Freeman K, Geppert J, *et al.* Accuracy of non-invasive prenatal testing using cell-free DNA for detection of Down, Edwards and Patau syndromes: a systematic review and meta-analysis. *BMJ Open* 2016;18:e010002.
8. Gregg AR, Skotko BG, Benkendorf JL, *et al.* Noninvasive prenatal screening for fetal aneuploidy, 2016 update: a position statement of the American College of Medical Genetics and Genomics. *Genet Med* 2016;18:1056–65.
9. Committee Opinion No. 640: Cell-free DNA screening for fetal aneuploidy. *Obstet Gynecol* 2015;126:e31–e37.
10. Society for Maternal–Fetal Medicine (SMFM) Publications Committee #36: Prenatal aneuploidy screening using cell-free DNA. *Am J Obstet Gynecol* 2015;212:711–16.
11. Benn P, Borrell A, Chiu RW, *et al.* Position statement from the Chromosome Abnormality Screening Committee on behalf of the Board of the International Society for Prenatal Diagnosis. *Prenat Diagn* 2015;35:725–34.
12. Dondorp W, de Wert G, Bombard Y, *et al.* Non-invasive prenatal testing for aneuploidy and beyond: challenges of responsible innovation in prenatal screening. Summary and recommendations. *Eur J Hum Genet* 2015;23:1592.
13. Wellesley D, Dolk H, Boyd PA, *et al.* Rare chromosome abnormalities, prevalence and prenatal diagnosis rates from population-based congenital anomaly registers in Europe. *Eur J Hum Genet* 2012;20:521–6.
14. Peters D, Chu T, Yatsenko SA, *et al.* Noninvasive prenatal diagnosis of a fetal microdeletion syndrome. *N Engl J Med* 2011;365:1847–8.
15. Jensen TJ, Dzakula Z, Deciu C, *et al.* Detection of microdeletion 22q11.2 in a fetus by next-generation sequencing of maternal plasma. *Clin Chem* 2012;58:1148–51.

16. Wapner RJ, Babiarez JE, Levy B, *et al.* Expanding the scope of noninvasive prenatal testing: detection of fetal microdeletion syndromes. *Am J Obstet Gynecol* 2015;212:332.e1–9.
17. Srinivasan A, Bianchi DW, Huang H, *et al.* Noninvasive detection of fetal subchromosome abnormalities via deep sequencing of maternal plasma. *Am J Hum Genet* 2013;92:167–76.
18. Yu SC, Jiang P, Choy KW *et al.* Noninvasive prenatal molecular karyotyping from maternal plasma. *PLoS One* 2013;8:e60968.
19. Chen S, Lau TK, Zhang C, *et al.* A method for noninvasive detection of fetal large deletions/duplications by low coverage massively parallel sequencing. *Prenat Diagn* 2013;33:584–90.
20. Straver R, Sistermans EA, Holstege H, *et al.* WISECONDOR: detection of fetal aberrations from shallow sequencing maternal plasma based on a within-sample comparison scheme. *Nucleic Acids Res* 2014;42:e31.
21. Bayindir B, Dehaspe L, Brison N, *et al.* Noninvasive prenatal testing using a novel analysis pipeline to screen for all autosomal fetal aneuploidies improves pregnancy management. *Eur J Hum Genet* 2015;23:1286–93.
22. Zhao C, Tynan J, Ehrich M, *et al.* Detection of fetal subchromosomal abnormalities by sequencing circulating cell-free DNA from maternal plasma. *Clin Chem* 2015;61:608–16.
23. Yin AH, Peng CF, Zhao X, *et al.* Noninvasive detection of fetal subchromosomal abnormalities by semiconductor sequencing of maternal plasma DNA. *Proc Natl Acad Sci U S A* 2015;112:14670–5.
24. Pescia G, Guex N, Iseli C, *et al.* Cell-free DNA testing of an extended range of chromosomal anomalies: clinical experience with 6,388 consecutive cases. *Genet Med* 2016. <https://doi.org/10.1038/gim.2016.72>.
25. Lefkowitz RB, Tynan JA, Liu T, *et al.* Clinical validation of a noninvasive prenatal test for genomewide detection of fetal copy number variants. *Am J Obstet Gynecol* 2016;(215):227.e1–6.
26. Snyder MW, Gammill HS, Shendure J. Copy-number variation and false positive results of prenatal screening. *N Engl J Med* 2015;373:2583–5.
27. Chudova DI, Sehnert AJ, Bianchi DW. Copy-number variation and false positive prenatal screening results. *N Engl J Med* 2016;375:97–8.
28. Fiorentino F, Bono S, Pizzuti F, *et al.* The importance of determining the limit of detection of non-invasive prenatal testing methods. *Prenat Diagn* 2016;36:304–11.
29. Li H, Durbin R. Fast and accurate short read alignment with Burrows–Wheeler transform. *Bioinformatics* 2009;25:1754–60.
30. Mersy E, Faas BH, Spierts S, *et al.* Cell-free RNA is a reliable fetoplacental marker in noninvasive fetal sex determination. *Clin Chem* 2015;61:1515–23.
31. Clopper C, Pearson ES. The use of confidence or fiducial limits illustrated in the case of the binomial. *Biometrika* 1934;26:404–13.
32. Lestou VS, Kalousek DK. Confined placental mosaicism and intrauterine fetal growth. *Arch Dis Child Fetal Neonatal Ed* 1998;79:F223–6.
33. Wilkins-Haug L, Quade B, Morton CC. Confined placental mosaicism as a risk factor among newborns with fetal growth restriction. *Prenat Diagn* 2006;26:428–32.
34. Robinson WP, Peñaherrera MS, Jiang R, *et al.* Assessing the role of placental trisomy in preeclampsia and intrauterine growth restriction. *Prenat Diagn* 2010;30:1–8.
35. Wolstenholme J, Rooney DE, Davison EV. Confined placental mosaicism, IUGR, and adverse pregnancy outcome: a controlled retrospective U.K. collaborative survey. *Prenat Diagn* 1994;14:345–61.
36. Eggermann T, Soellner L, Buiting K, *et al.* Mosaicism and uniparental disomy in prenatal diagnosis. *Trends Mol Med* 2015;21:77–87.

SUPPORTING INFORMATION

Additional Supporting Information may be found online in the supporting information tab for this article.